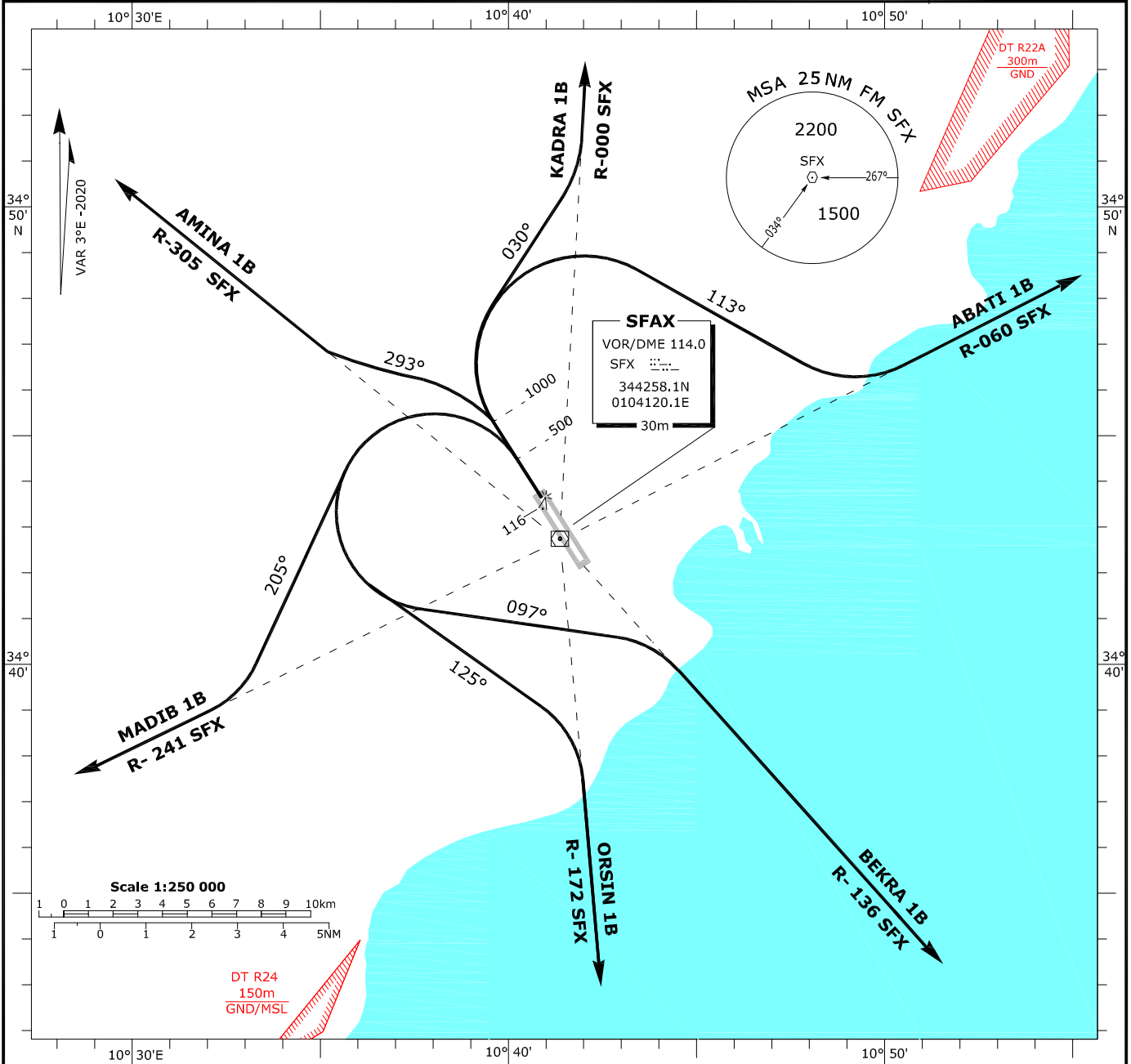


STANDARD DEPARTURE-CHART INSTRUMENT (SID)-ICAO	TRANSITION ALTITUDE 6000 ft BEARINGS AND TRACKS ARE MAGNETIC ELEVATION AND ALTITUDE IN ft	TWR 120.15 APP 123.7	SFAX-Thyna RWY 33
---	---	-------------------------	----------------------



SID RWY 33	ROUTING	REMARKS
ABATI 1B	After take-off, climb straight ahead. At 1000ft turn right ,track 113° then intercept and follow R-060 SFX to ABATI.Minimum climb gradient: 365 ft/NM (slope 6%) until 7500 ft. If unable to comply advise ATC.	No turn permitted below 500 ft. Max IAS 250 kt below FL100.
ORSIN 1B	After take-off, climb straight ahead. At 500ft turn left ,track 125° then intercept and follow R-172 SFX to ORSIN.Minimum climb gradient: 365 ft/NM (slope 6%) until 6000 ft. If unable to comply advise ATC.	
MADIB 1B	After take-off, climb straight ahead. At 500ft turn left ,track 205° then intercept and follow R-241 SFX to MADIB.Minimum climb gradient: 414 ft/NM (slope 6.8%) until 7500 ft. If unable to comply advise ATC.	
AMINA 1B	After take-off, climb straight ahead. At 1000ft turn left ,track 293° then intercept and follow R-305 SFX to AMINA.Minimum climb gradient:487 ft/NM (slope8%) until 7500 ft. If unable to comply advise ATC.	
KADRA 1B	After take-off, climb straight ahead. At 1000ft turn right,track 030° then intercept and follow R-000 SFX to KADRA.Minimum climb gradient: 487 ft/NM (slope 8%) until 7500 ft. If unable to comply advise ATC.	
BEKRA 1B	After take-off, climb straight ahead. At 500ft turn left ,track 097° then intercept and follow R-136 SFX to BEKRA.Minimum climb gradient: 365 ft/NM (slope6%) until 5000 ft. If unable to comply advise ATC.	