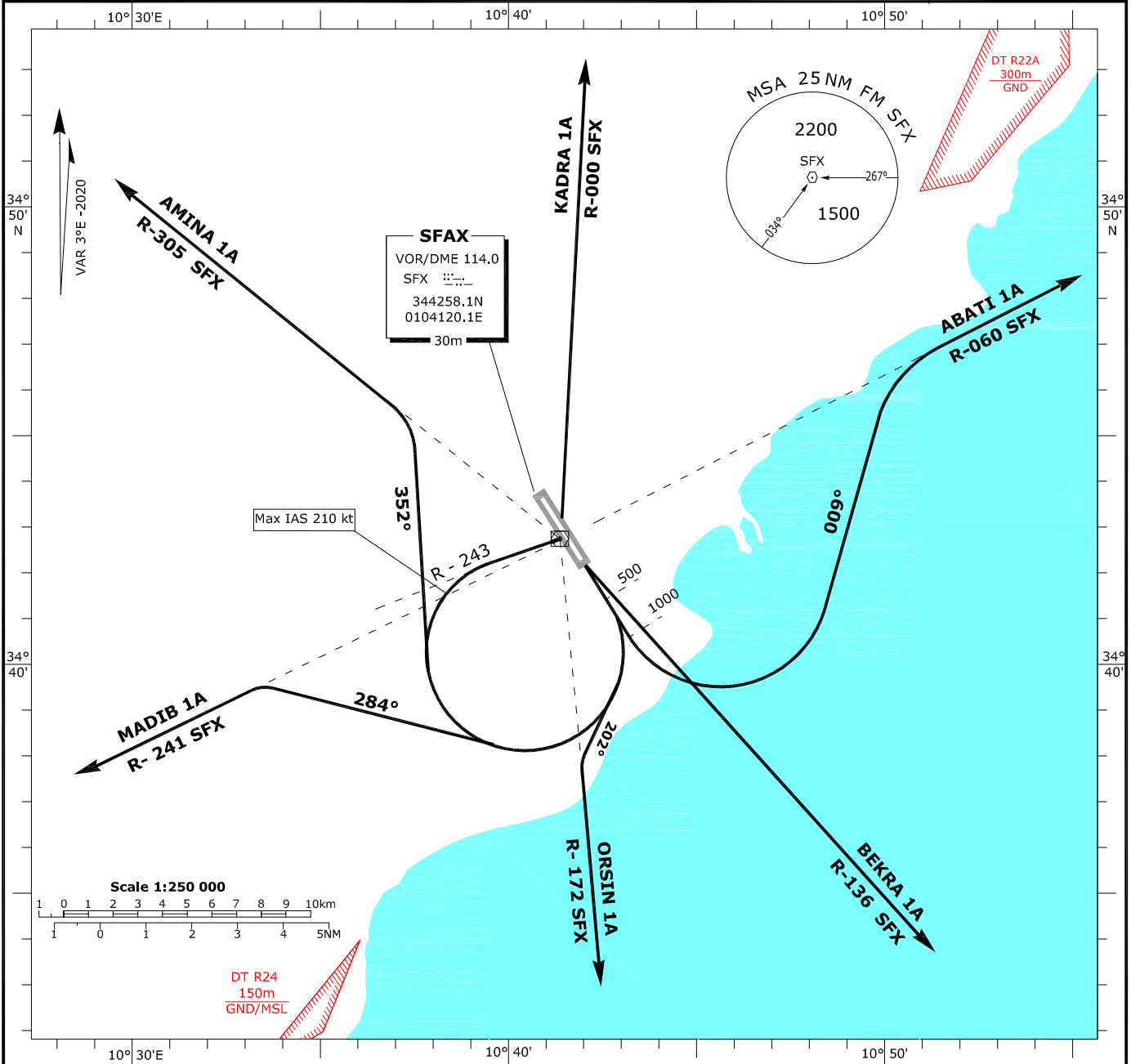


STANDARD DEPARTURE-CHART INSTRUMENT (SID)-ICAO	TRANSITION ALTITUDE 6000 ft BEARINGS AND TRACKS ARE MAGNETIC ELEVATION AND ALTITUDE IN ft	TWR 120.15 APP 123.7	SFAX-Thyna RWY 15
---	---	---------------------------------	------------------------------



SID RWY 15	ROUTING	REMARKS
ABATI 1A	After take-off, climb straight ahead. At 1000ft turn left ,track 009° then intercept and follow R-060 SFX to ABATI.Minimum climb gradient:377 ft/NM (slope 6.2%) until 7500 ft.If unable to comply advise ATC.	No turn permitted below 500 ft. Max IAS 250 kt below FL100.
ORSIN 1A	After take-off, climb straight ahead. At 500ft turn right track 202° then intercept and follow R-172 SFX to ORSIN.Minimum climb gradient:475 ft/NM (slope 7.8%) until 7500 ft.If unable to comply advise ATC.	
MADIB 1A	After take-off, climb straight ahead. At 500ft turn right ,track 284° then intercept and follow R-241 SFX to MADIB.Minimum climb gradient:389 ft/NM (slope 6.4%) until 7500 ft.If unable to comply advise ATC.	
AMINA 1A	After take-off, climb straight ahead. At 500ft turn right ,track 352° then intercept and follow R-305 SFX to AMINA.Minimum climb gradient:365 ft/NM (slope 6%) until 6000 ft.If unable to comply advise ATC.	
KADRA 1A	After take-off, climb straight ahead. At 500ft turn right (MAX IAS 210 kt) to join SFX VOR (Do not overshoot R-243 SFX).Cross SFX VOR at 3000ft or above then intercept and follow R-000 SFX to KADRA.Minimum climb gradient:365 ft/NM (slope 6%) until 3000 ft.If unable to comply advise ATC.	
BEKRA 1A	After take-off, climb straight ahead, then intercept and follow R-136 SFX to BEKRA.Minimum climb gradient:523 ft/NM (slope 8.6%) until 7500 ft.If unable to comply advise ATC.	