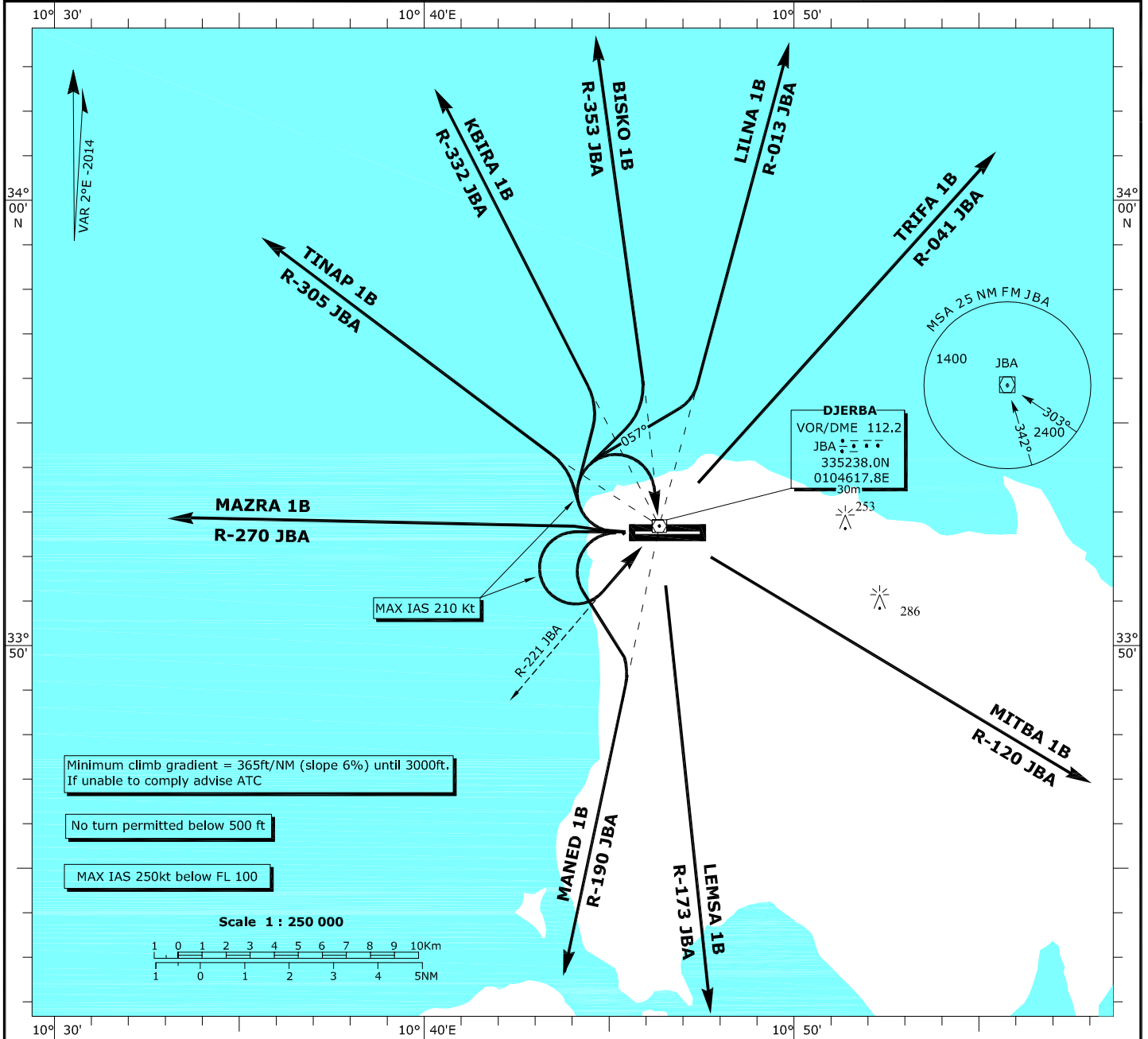


**STANDARD DEPARTURE CHART  
INSTRUMENT (SID) - ICAO**

TRANSITION ALTITUDE 6000 ft  
BEARINGS AND TRACKS ARE MAGNETIC  
ELEVATIONS AND ALTITUDES IN ft

**TWR 118.15**  
**APP 120.3**  
**ATIS 124.525**

**DJERBA- Zarzis**  
**RWY 27**



SID RWY 27	ROUTING
<b>BISKO 1B</b>	After take off, climb straight ahead. At 500 ft, turn right to intercept and follow R-353 JBA to BISKO.
<b>LILNA 1B</b>	After take off, climb straight ahead. At 500 ft, turn right track 057° to intercept and follow R-013 JBA to LILNA.
<b>TRIFA 1B</b>	After take off, climb straight ahead. At 500 ft, turn left to intercept and follow R-221 JBA to join VOR (Max IAS 210kt). Cross JBA VOR at 3000 ft or above then intercept and follow R-041 JBA to TRIFA.
<b>MITBA 1B</b>	After take off, climb straight ahead. At 500 ft, turn right to JBA VOR ( Max IAS 210 Kt). Cross JBA VOR at 3000 ft or above then intercept and follow R-120 JBA to MITBA.
<b>LEMSA 1B</b>	After take off, climb straight ahead. At 500 ft, turn right to JBA VOR ( Max IAS 210 Kt). Cross JBA VOR at 3000 ft or above then intercept and follow R-173 JBA to LEMSA.
<b>MANED 1B</b>	After take off, climb straight ahead. At 500 ft, turn left to intercept and follow R-190 JBA to MANED.
<b>MAZRA 1B</b>	After take off, climb straight ahead then intercept and follow R-270 JBA to MAZRA.
<b>TINAP 1B</b>	After take off, climb straight ahead. At 500 ft, turn right to intercept and follow R-305 JBA to TINAP.
<b>KBIRA 1B</b>	After take off, climb straight ahead. At 500 ft, turn right to intercept and follow R-332 JBA to KBIRA.