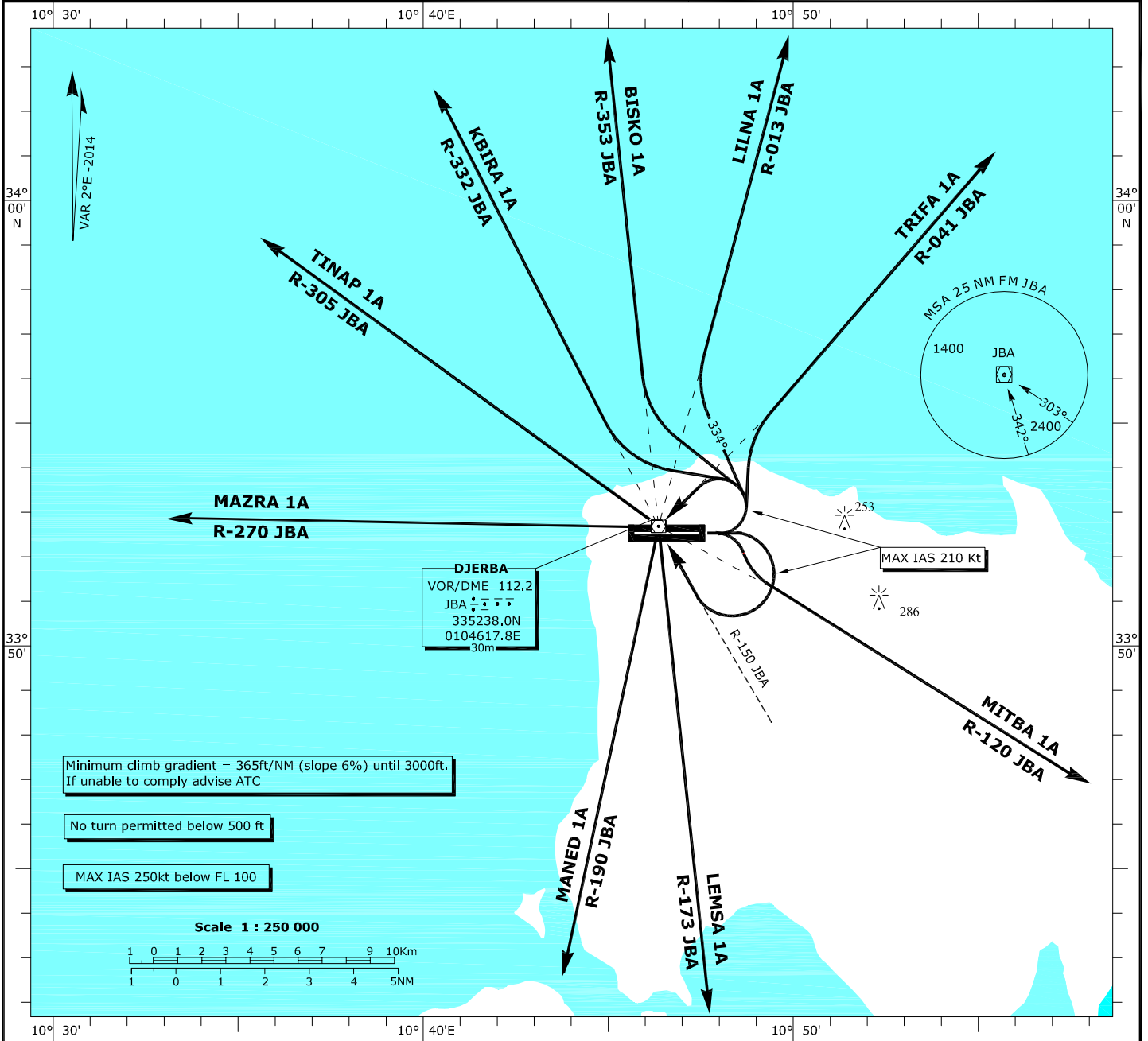


**STANDARD DEPARTURE CHART
INSTRUMENT (SID) - ICAO**

TRANSITION ALTITUDE 6000 ft
BEARINGS AND TRACKS ARE MAGNETIC
ELEVATIONS AND ALTITUDES IN ft

TWR 118.15
APP 120.3
ATIS 124.525

DJERBA- Zarzis
RWY 09



SID RWY 09	ROUTING
BISCO 1A	After take off, climb straight ahead. At 500 ft, turn left to intercept and follow R-353 JBA to BISCO.
LILNA 1A	After take off, climb straight ahead. At 500 ft, turn left track 334° to intercept and follow R-013 JBA to LILNA.
TRIFA 1A	After take off, climb straight ahead. At 500 ft, turn left to intercept and follow R-041 JBA to TRIFA.
MITBA 1A	After take off, climb straight ahead. At 500 ft, turn right to intercept and follow R-120 JBA to MITBA.
LEMSA 1A	After take off, climb straight ahead. At 500 ft, turn left to JBA VOR (MAX IAS 210 Kt). Cross JBA VOR at 3000 ft or above then intercept and follow R-173 JBA to LEMSA.
MANED 1A	After take off, climb straight ahead. At 500 ft, turn left to JBA VOR (MAX IAS 210 Kt). Cross JBA VOR at 3000 ft or above then intercept and follow R-190 JBA to MANED.
MAZRA 1A	After take off, climb straight ahead. At 500 ft, turn right to intercept and follow R-150 JBA to join VOR (MAX IAS 210 Kt). Cross JBA VOR at 3000ft or above then intercept and follow R-270 JBA to MAZRA.
TINAP 1A	After take off, climb straight ahead. At 500 ft, turn right to intercept and follow R-150 JBA to join VOR (MAX IAS 210 Kt). Cross JBA VOR at 3000ft or above then intercept and follow R-305 JBA to TINAP.
KBIRA 1A	After take off, climb straight ahead. At 500 ft, turn left to intercept and follow R-332 JBA to KBIRA.